



3Z

- Combination air filter for the removal of particulates (MERV 8) and odors/gases
- Camfil RAD high-performance media technology
- Moisture resistant beverage board frame
- Individually packaged to ensure performance on installation



One of the common applications for these filters, is to address odors created during nearby tarred roofing replacement or repairs. Carbon pleats offer a good solution to a temporary problem.

The CityPleat features a combination filter that removes particulate, gases, and odors. It is recommended for use in all types of HVAC systems (both indoor and outdoor air) in a wide variety of residential and commercial applications when only a 1", 2" or 4" space is available.



It is available in wide range of sizes, depths, and media capacities to offer relief from unpleasant odors including human bioeffluents, food preparation, waste products, plus a variety of other objectionable sources.

This combination filter has a MERV 8 prefilter stage to protect equipment and secondary filters and is heat-bonded to Camfil's Rapid Adsorption Dynamic (RAD) media layer. The RAD media then receives air from which dirt particles have been removed to provide a better initial removal efficiencies and longer lifetime against offensive molecular contaminants.

The combination media pack is sealed into a die-cut, moisture-resistant beverage board frame to prevent air bypass and provide for easy disposal. Each filter is packaged individually and sealed to allow for safe storage and to prevent premature exposure of the molecular media.

CityPleats also provide a solution for geographic areas of non-attainment as published by the United States Environmental Protection Agency (EPA) in the National Ambient Air Quality Standards (NAAQS).

The 1" deep CityPleat is available in five sizes, the 2" in seven sizes and the 4" in four sizes to fit a variety of existing HVAC equipment.

Life expectancy of adsorbent phase of each filter is determined by the amount or weight of adsorbent in each model. Your efficiency will vary with the level of odors or gases that challenge the filter over time. Contact your authorized Camfil sales outlet or factory for guidance.

\* Comfort Air refers to a general application where there is a desire to improve the air quality within a space, especially as it relates to the comfort (odor control) of building occupants. Some examples include athletics, education, hospitality, odor complaints, office buildings and retail.

# CityPleat 150, 200 & 300

## Performance Data

### CityPleat 150

The following one-inch panel is designed for installation with a one-inch filter track typically used in residential, small commercial and terminal HVAC units.

Model Designator Part Number	Rated Airflow (cfm)	Nominal Size (inches)	Media Area (ft <sup>2</sup> )	MERV / Ozone Ratings	Initial Resistance (inches, w.g.)	Weight (grams)
CP150-25x20x1 406454003	1215	25x20x1	8.30	MERV 8  Oz 2 (>20% Ozone removal efficiency)	0.4	131
CP150-24x24x1 406454005	1400	24x24x1	9.80			150
CP150-24x20x1 406454012	1165	24x20x1	7.90			126
CP150-24x12x1 406454006	700	24x12x1	5.00			74
CP150-20x20x1 406454002	970	20x20x1	6.60			104

### CityPleat 200

The following two-inch deep panel contains more adsorbent than the previous listing and will have a higher gaseous contaminant removal efficiency. Typical applications include rooftop HVAC, free-standing units and as prefilters in two-stage systems.

Model Designator Part Number	Rated Airflow (cfm)	Nominal Size (inches)	Media Area (ft <sup>2</sup> )	MERV / Ozone Ratings	Initial Resistance (inches, w.g.)	Weight (grams)
CP200-25x20x2 406455003	1740	25x20x2	9.94	MERV 8  Oz 2 (>20% Ozone removal efficiency)	0.47	175
CP200-25x16x2 406455004	1390	25x16x2	8.08			139
CP200-24x24x2 406455005	2000	24x24x2	11.30			200
CP200-24x20x2 406455012	1670	24x20x2	10.02			168
CP200-24x12x2 406455006	1000	24x12x2	5.33			97
CP200-20x20x2 406455002	1390	20x20x2	7.89			139
CP200-20x16x2 406455001	100	20x16x2	6.42			111

### CityPleat 300

The following panel contains more adsorbent than the previous listing and will have a higher gaseous contaminant removal efficiency. Typical applications include rooftop HVAC, free-standing units and as prefilters in two-stage systems.

Model Designator Part Number	Rated Airflow (cfm)	Nominal Size (inches)	Media Area (ft <sup>2</sup> )	MERV / Ozone Ratings	Initial Resistance (inches, w.g.)	Weight (grams)
CP300-25x20x2 406456003	1740	25x20x2	14.31	MERV 8  Oz 3 (>30% Ozone removal efficiency)	0.42	262
CP300-25x16x2 406456004	1390	25x16x2	11.96			208
CP300-24x24x2 406456005	2000	24x24x2	16.62			300
CP300-24x20x2 406456012	1670	24x20x2	13.72			251
CP300-24x12x2 406456006	1000	24x12x2	8.08			146
CP300-20x20x2 406456002	1390	20x20x2	11.36			209
CP300-20x16x2 406456001	1110	20x16x2	9.5			166

#### PRODUCT NOTES:

- MERV, Minimum Efficiency Reporting Value per ASHRAE Filter Testing Standard 52.2.
- Maximum operating temperature 170° F (70° C).
- 70% RH maximum for optimum adsorption. (Schedule air filters for change when initial pressure drop has doubled.
- Final pressure drop should not exceed 1.2" w.g.
- Filters may be installed with the pleats either vertical (preferred) or horizontal.
- Other media and applications available by special order. Contact the factory.
- Filters may be installed with the pleats either vertical (preferred) or horizontal.

For detailed specifications or drawing, please consult your local Camfil Distributor or Representative or download from the Molecular Toolbox located in the Segments Tab of CamTab File Archive at [www.camfil.us](http://www.camfil.us). For assistance specific to this product please contact your local Camfil distributor or representative, or Camfil's Washington, NC facility at [Sales-WA@camfil.com](mailto:Sales-WA@camfil.com) or all toll-free at (877) 658-6588.

## Performance Data

### CityPleat 400

The following four-inch deep panel contains more adsorbent than the previous listing and will have a higher gaseous contaminant removal efficiency. Typical applications include rooftop HVAC, free-standing units and as prefilters in two-stage systems.

Model Designator Part Number	Rated Airflow (cfm)	Nominal Size (inches)	Media Area (ft <sup>2</sup> )	MERV / Ozone Ratings	Initial Resistance (inches, w.g.)	Weight (grams)
CP400-24x24x4 406458005	2000	24x24x4	22.70	MERV 8  Oz 3 (>30% Ozone removal efficiency)	0.49	400
CP400-24x20x4 406458012	1670	24x20x4	16.70			335
CP400-24x12x4 406458006	1000	24x12x4	10.10			195
CP400-20x20x4 406458002	1390	20x20x4	14.40			278

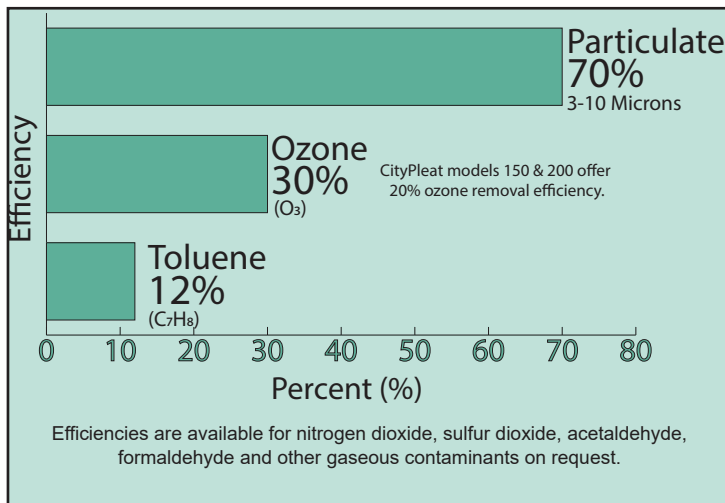
### CityPleat 500

The following panel contains more adsorbent than the previous listing and will have a higher gaseous contaminant removal efficiency. Typical applications include rooftop HVAC, free-standing units and as prefilters in two-stage systems.

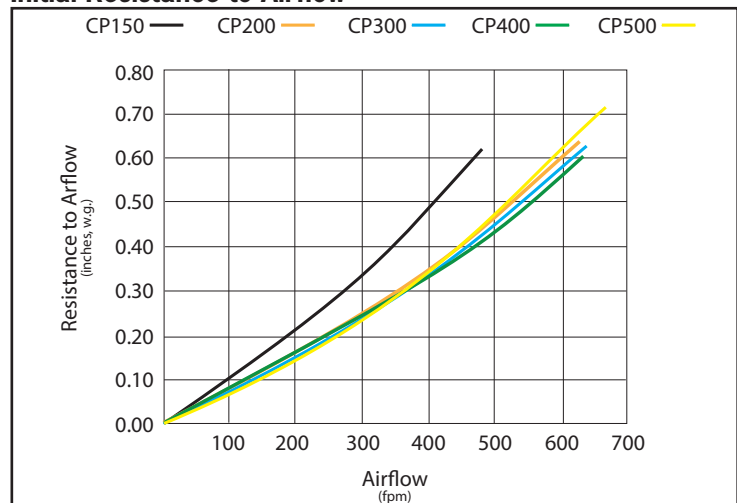
Model Designator Part Number	Rated Airflow (cfm)	Nominal Size (inches)	Media Area (ft <sup>2</sup> )	MERV / Ozone Ratings	Initial Resistance (inches, w.g.)	Weight (grams)
CP500-24x24x4 406459005	2000	24x24x4	27.50	MERV 8  Oz 3 (>30% Ozone removal efficiency)	0.48	500
CP500-24x20x4 406459012	1670	24x20x4	22.50			419
CP500-24x12x4 406459006	1000	24x12x4	13.70			243
CP500-20x20x4 406459002	1390	20x20x4	18.90			348

The removal efficiencies listed below are derived from laboratory testing with specific contaminant challenge levels indicative of common applications. Every gaseous contaminant situation is different and application of the product should be applied with the assistance of your filter consultant.

### Initial Removal Efficiencies\*



### Initial Resistance to Airflow



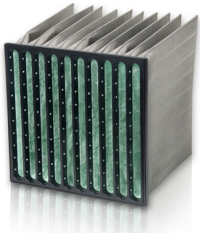
\* Camfil's unique molecular filtration testing laboratory runs tests according to the following standards: ASHRAE 145.1, ASHRAE 145.2, ISO 10121-1 and ISO 10121-2. The initial removal efficiencies referenced in the chart above were determined by challenging full size (24" x 24") filters with realistic gas concentrations in 2,000 CFM of air at 50% RH and 72F. More information on this unique testing facility can be provided.

Lifetime note for molecular contaminant removal products: The actual lifetime for your application can vary drastically depending on concentration of gases, flow rate, temperature, and/or relative humidity. Contact your local distributor, representative or Camfil for application guidance.

## Other CityFamily Products

### City-Flo XL

MERV 13 & 13-A Particulate and Molecular Filter



### CityCarb E

MERV 13 & 11-A Particulate and Molecular Filter



### CityCarb I

MERV 15 & 14-A Particulate and Molecular Filter



### CityCarb CH

MERV 15 & 13-A Particulate and Molecular Filter



### CitySorb DP

MERV 8 Molecular Filter



### CitySorb DP Acid

MERV 8 Molecular Filter



Sector	Definition	Industry Examples
Comfort Air	Comfort Air refers to a general application where there is a desire to improve the air quality within a space, especially as it relates to the comfort (odor control) of building occupants.	Athletics, Education, Hospitality, Odor Complaint, Office Building, Retail
Indoor Air Quality	Indoor Air Quality (IAQ) refers to a specific application where there is a need to meet air quality standards within a space, especially as it relates to the health and comfort of building occupants.	Airport, Casino, Healthcare, Industrial Office Space
Advanced IAQ	Advanced IAQ refers to a specific application where the primary concern is the impact air quality has on the equipment and/or processes within a space, while still considering the health and comfort of the building occupants.	Cultural Heritage, Food & Beverage, Laboratory Space